



MCT 360-ATEX22

The Safe Gauging Option for Dusty Operating Environments



Explosive dusts created from both natural and synthetic organic products can ignite through direct contact with hot surfaces or from sparks.

The ATEX 137 Worker Protection and 94/9/EC Product Directives, implemented by means of the DSEAR (Dangerous Substances and Explosive Atmospheres regulations) have been instigated to prevent such an event from occurring, resulting in a safer and more productive working environment.

In response, Process Sensors offers an ATEX Zone 22 Process Ready Gauge which complies with standards EN 61241-0/61241-1 which cover the general requirements for electrical apparatus for use in the presence of **combustible dust**, and more specific requirements relating to protection by enclosure.

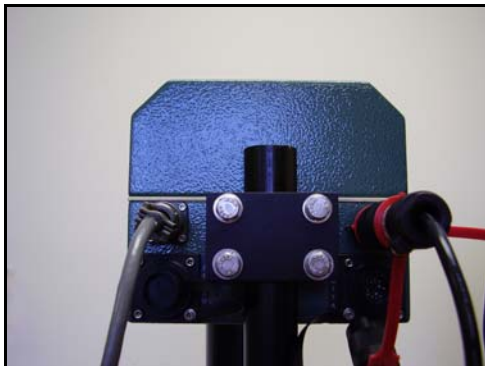
Description

The MCT 360-ATEX 22 enclosure is constructed from mild steel or cast aluminium. The bottom section incorporates either a kElF or sapphire viewing window, and is sealed to the top section with neoprene food grade gasket material. The power connector is a Stahl ATEX rated Press Fit connector, the OI, analog and digital connectors are all IP65 rated.

The MCT 360-ATEX 22 operates under ambient temperatures of up to 50 °C without air cooling , fitting a vortex air cooler will extend it's operational temperature range to 80 °C ambient, and will not compromise it's ATEX rating owing to an internal safety device.

Specifications

The standard unit comprises a wall mountable Operator Interface, Mild Steel Sensor/kElF viewing window, a 6m O.I cable and 1m power cable.



Rear view of ATEX 22 gauge

MCT Atex Transmitter

Measured constituents:	1 or 2 simultaneously
Accuracy/Repeatability:	As for the standard MCT 360
Calibration Codes:	50 Standard
Response Time:	1-999 seconds
	3 modes...damping, integration and gated
Sensor-product height:	150-400mm(6-16 inches)
Power:	90-260 VAC 50/60Hz, 40 Watts
Outputs:	Two 4-20 mA or 0-10V (isolated) and RS232 or RS485
Weight:	20lbs (9 Kg)
Ambient Temperature:	0-50°C, to 80°C with air cooling.
Enclosure:	Painted Mild Steel

Operator Interface: Wall Mountable

Display:	Alphanumeric vacuum Fluorescent.
Languages:	English + a selection of others
Power:	From MCT 360 ATEX 22 Transmitter
Cable:	6m (20ft) standard to 15m (50ft) - SPI Comms., otherwise RS485.
Keypad:	Provides user access to MCT-ATEX settings
Enclosure:	Pressed Steel